



PowerPlug by Connect

Quick Start Guide




Congratulations on Choosing the PowerPlug from Constellation Connect

Plug into easy energy savings and whole home control with your new all-in-one smart plug and smart home hub.

**It's easy to set up your PowerPlug.
Here's what you need to do.**

Step 1

Install the Constellation Connect app on your mobile device. Just look for the  in the iOS App Store or on Google Play. If you already have the Constellation Connect app, just log in and select Add New Controller.



Step 2

Open your Constellation Connect app and select PowerPlug from the controller list.



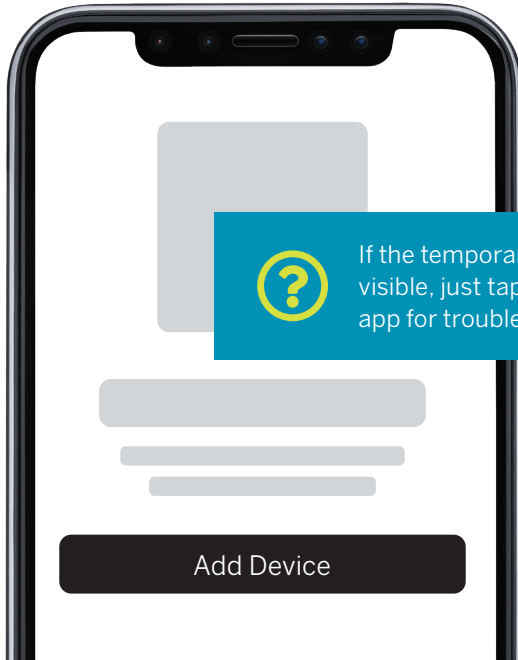
Step 3

Now put your PowerPlug into an outlet. It will power on automatically and the blue LED will blink about once per second.



Step 4

The PowerPlug will create a temporary Wi-Fi network called PowerPlug_XXXX. The Constellation Connect app will prompt you to go to the Settings menu on your mobile device to connect to it.



If the temporary network is not visible, just tap Need Help in the app for troubleshooting tips.

Add Device

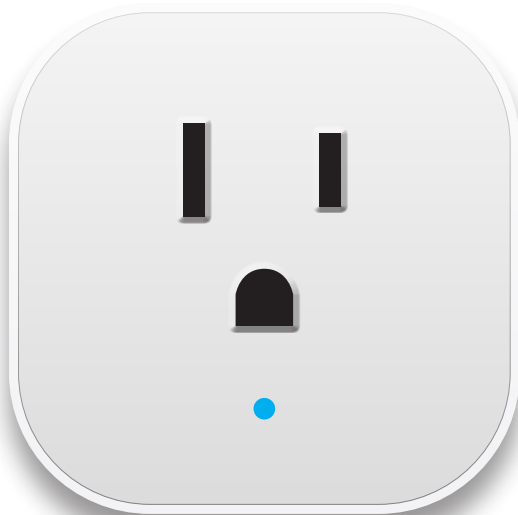
Step 5

Once you have selected the PowerPlug network, return to the Constellation Connect app and follow the prompts to complete the setup process. While your PowerPlug is connecting to your home Wi-Fi, it should blink once every three seconds.



Step 6

Congratulations, your PowerPlug has been set up successfully. The LED will now remain a steady color.



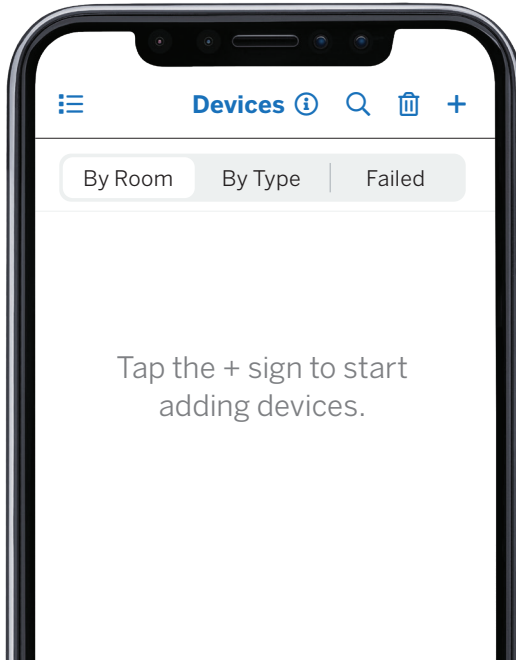
Step 7

Now it's time to create your Constellation Connect account. The app will walk you through it, and once you're done, the account will automatically be linked to your PowerPlug.



Step 8

To start using your PowerPlug, plug in a device to control, such as a lamp. To add a new device to your system, tap the menu icon in the top left corner of the dashboard, select Devices, and then tap the + sign to launch the Device Pairing Wizard.



Plug into easy energy savings

The PowerPlug lets you control multiple devices from a single app. When you add devices such as lights, thermostats, sensors, and door locks to your Constellation Connect system, you'll be able to enjoy greater comfort and peace of mind with just a touch.

Control your home from anywhere

The Constellation Connect app offers some key features that help you simplify things at home and keep an eye on things when you're away.

Modes

Modes give you the ability to control all your devices with a single tap. There are pre-set modes for Home, Away, Night, and Vacation.

Scenes

The true power of home automation is when your home can do things for you. With Scenes you can schedule your lights to turn off when you leave for work in the morning, or to fade up as day turns to night.

Notifications

Your Constellation Connect system can send an alert via text or email to let you—or other users —know about what's going on at home. Want to know when the front door opens? Or if motion is detected outside? You can set alerts for just about anything.



PowerPlug by Connect

**That's it! You're now ready to enjoy
smarter home control.**

support@constellationconnect.com • 1-855-532-1979

Support Hours:

Monday-Friday 8:00 AM – 8:00 PM EST

Saturday and Sunday 9:00 AM – 5:00 PM EST